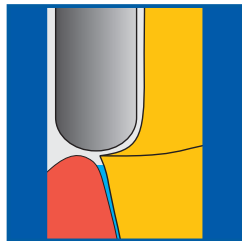


Präparationsempfehlungen

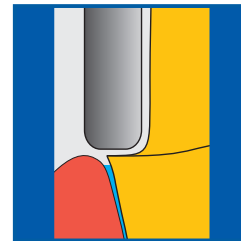
Preparation guidelines

Allgemeine Hinweise

General indications



Ausgeprägte Hohlkehlp
präparation (90°).
*Pronounced chamfer
(90°).*



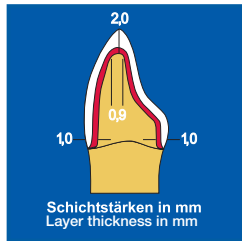
Stufenpräparation mit
innen gerundeter Kante.
*Shoulder preparation
with rounded ario-cer-
vical line angle.*



Zirkuläre Schnitttiefe mindes-
tens 1 mm.
*Circular marginal cutting at
least 1 mm.*

Frontzahnrestaurationen

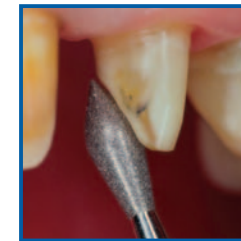
Anterior preparations



Frontzahnpräparation.
Anterior preparations.



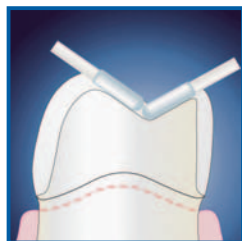
Axiale und inzisale Re-
duktion.
*Axial and incisal re-
duction.*



Palatinale Reduktion.
Palatal reduction.

Seitenzahnrestaurationen

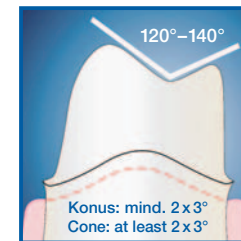
Posterior preparations



Okklusale Reduktion der
anatomischen Form
um mindestens 1,5 mm.
*Occlusal substance re-
duction at least 1.5 mm.*



Axiale Reduktion der
anatomischen Form
um mindestens 1 mm.
*Axial substance reduc-
tion at least 1 mm.*



Okklusalfäche im Winkel zwi-
schen 120° und 140°, Konus-
winkel der korrespondieren-
den axialen Flächen 3°-4°.
*120°-140° opening angle of
the occlusal surfaces. The
cone angle of the corre-
sponding axial surfaces should
be 3°-4°.*